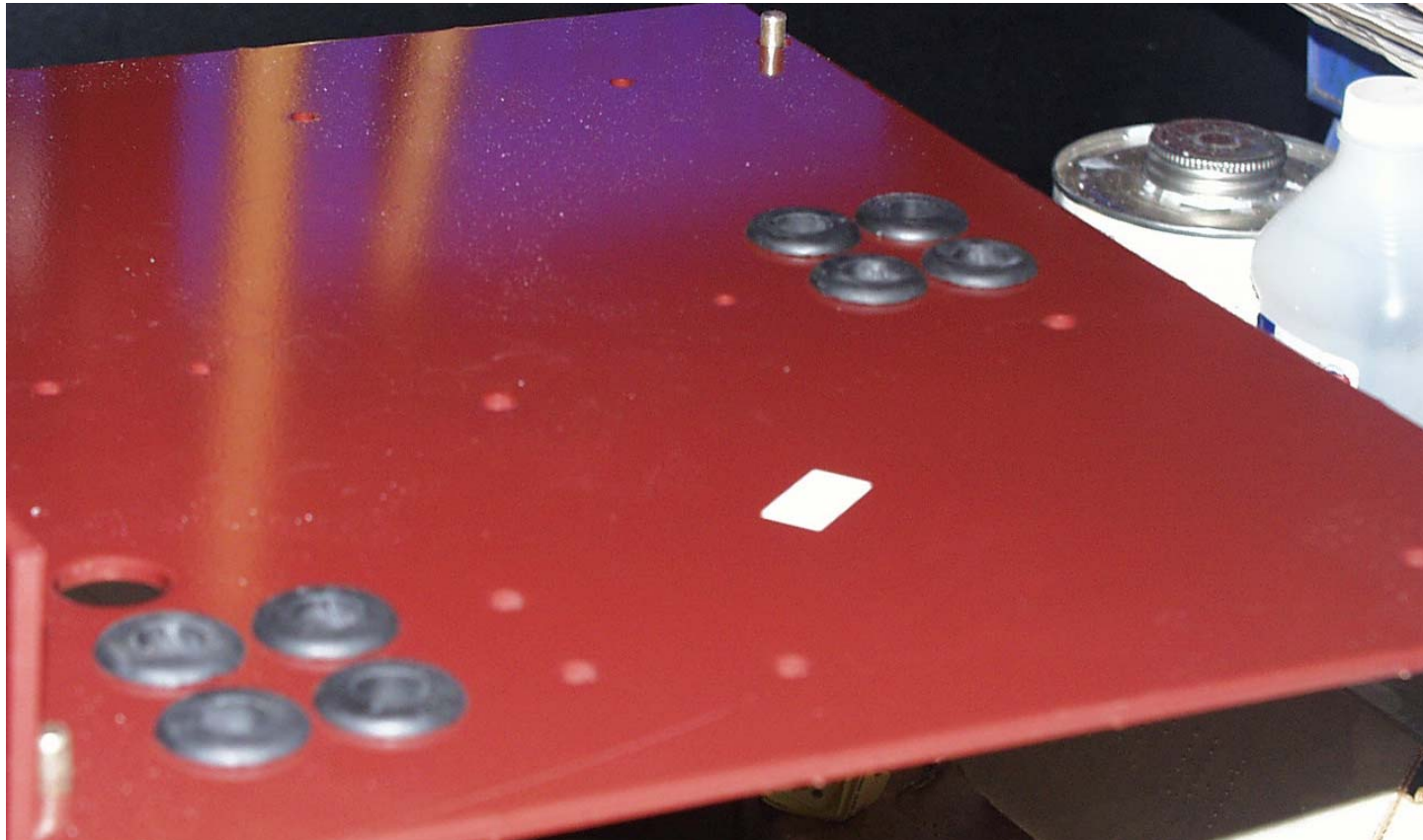


ASSEMBLY# : 3311730 - ASSY-CONTROL BOX SUB SW 62
DOCUMENTED BY: POWERBOSS
PAGE NUMBER: 1
DATE: APR. 24, 2000



Insert 8ea. Grommet(3311564) into Plate(3311311) as shown.

ASSEMBLY# : 3311730 - ASSY-CONTROL BOX SUB SW 62

DOCUMENTED BY: POWERBOSS

PAGE NUMBER: 2

DATE: APR. 24, 2000

TOOLS: FLATHEAD SCREWDRIVER



Attach 2ea. Angle(3311420) to 2ea. Contactor-Main(3311018)
with 2ea. Scr-Thm(3400322). Tighten with flathead screwdriver.
****NOTE the position of the angle on each of the contactor.**

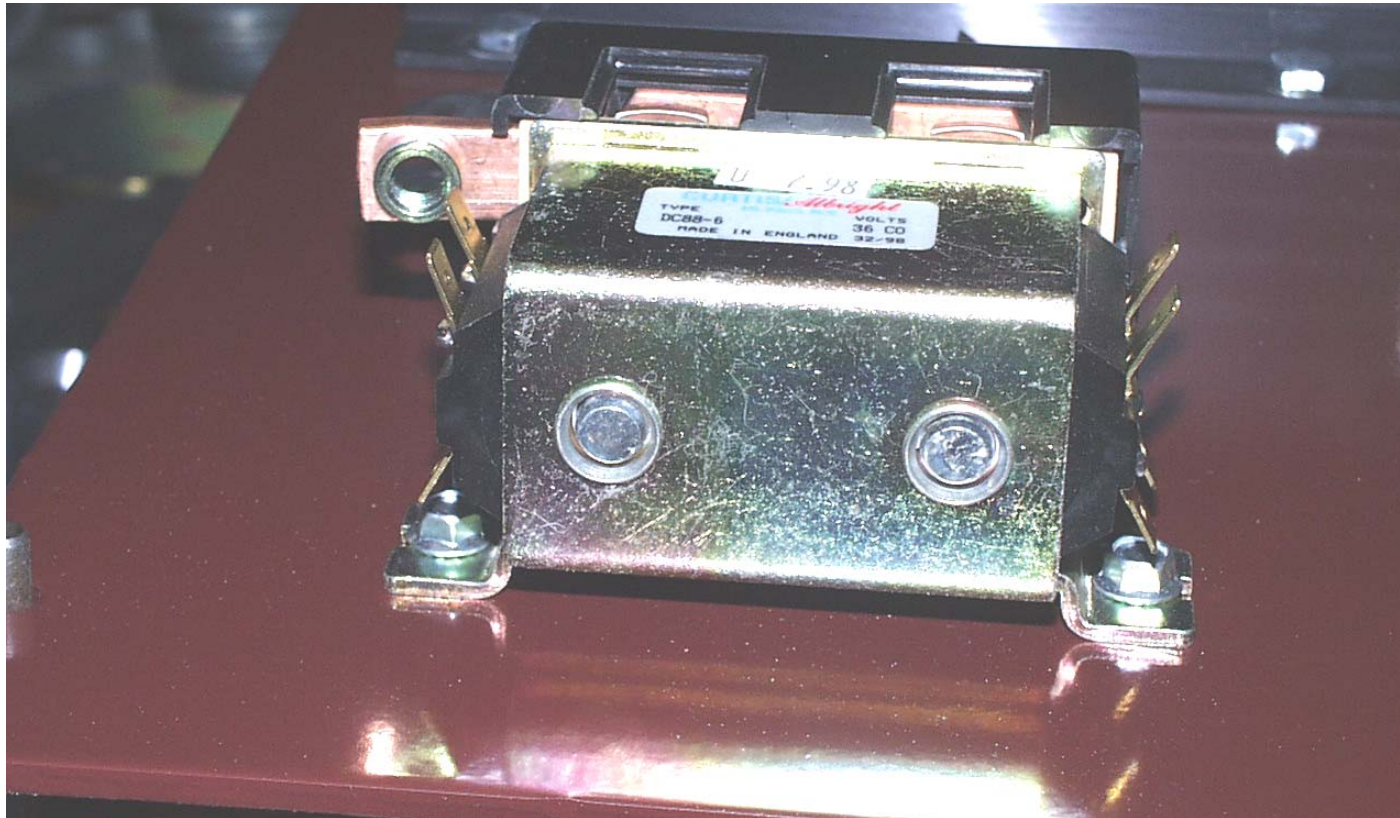
ASSEMBLY# : 3311730 - ASSY-CONTROL BOX SUB SW 62

DOCUMENTED BY: POWERBOSS

PAGE NUMBER: 3

DATE: APR. 24, 2000

TOOLS:5/16 WRENCH, 3/8 WRENCH



Attach Resistor(3311019) with 2ea. Scr-Hex(3400315) and 2ea. Nut-Hex(3400172). Tighten with 5/16 wrench and 3/8 wrench.

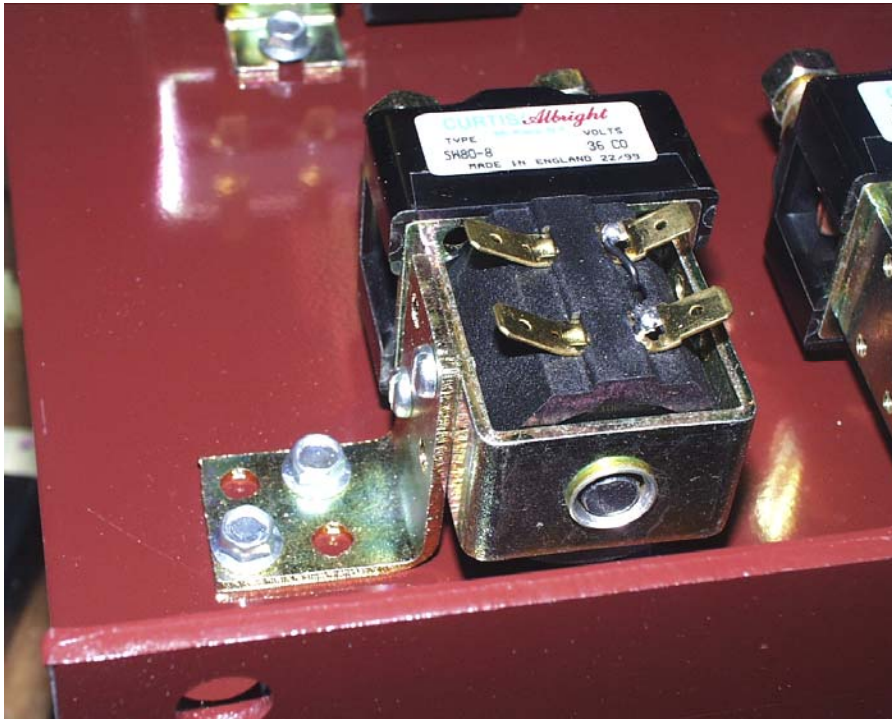
ASSEMBLY# : 3311730 - ASSY-CONTROL BOX SUB SW 62

DOCUMENTED BY: POWERBOSS

PAGE NUMBER: 4

DATE: APR. 24, 2000

TOOLS: 5/16 WRENCH, 3/8 WRENCH



Secure both contactor with 2ea. Scr-Hex(3400315) and 2ea. Nut-Hex(3400172). Tighten with 5/16 wrench and 3/8 wrench.

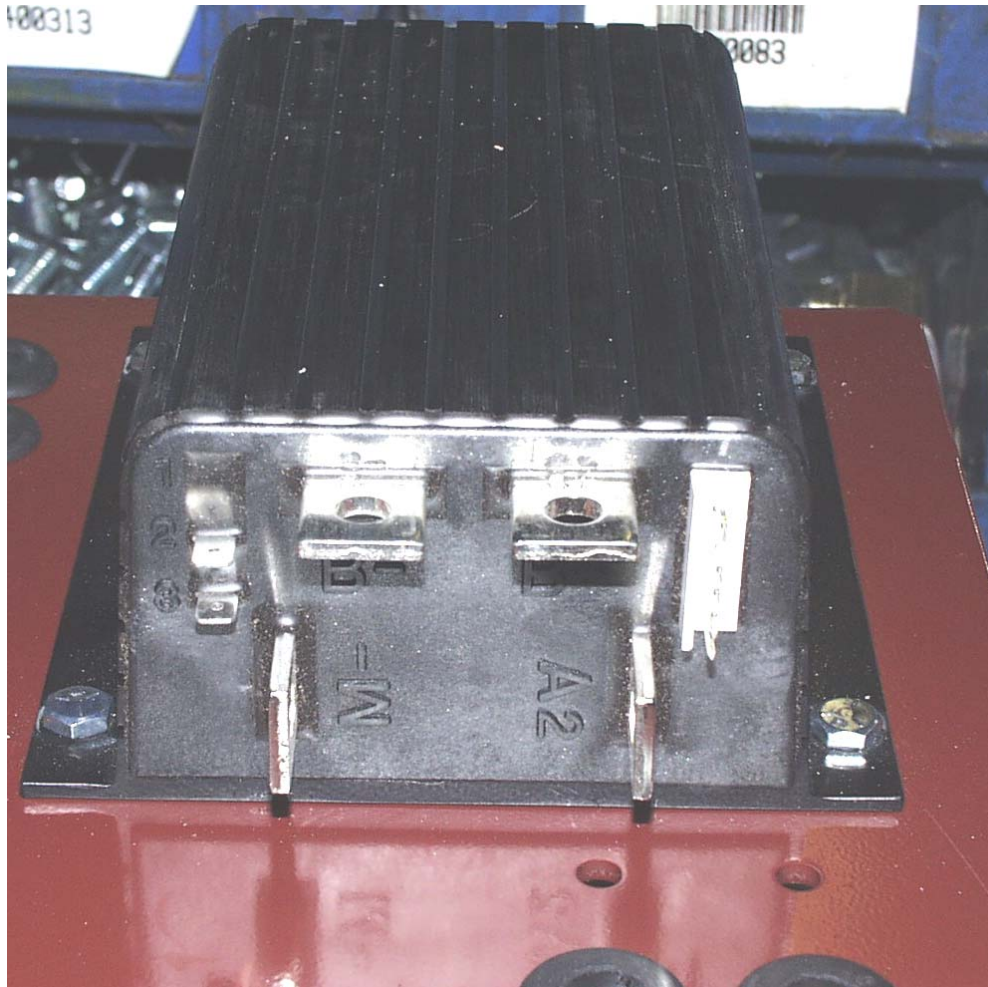
ASSEMBLY# : 3311730 - ASSY-CONTROL BOX SUB SW 62

DOCUMENTED BY: POWERBOSS

PAGE NUMBER: 5

DATE: APR. 24, 2000

TOOLS: 7/16 WRENCH, 7/16 SOCKET



Attach Controller(3311016) with 4ea. Scr-Hex(3400042) and 4ea. Nut-Hex(3400081). Tighten with 7/16 socket and 7/16 wrench.

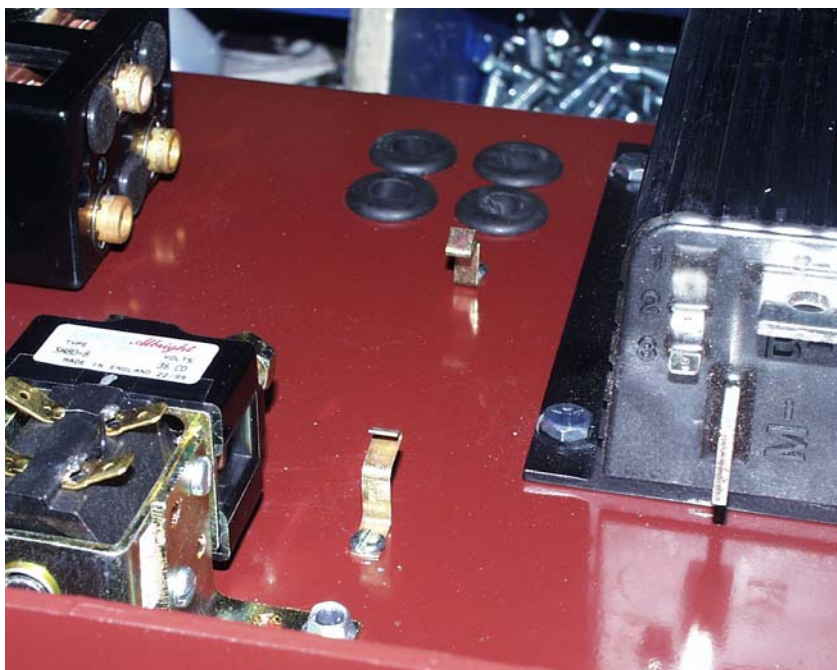
ASSEMBLY# : 3311730 - ASSY-CONTROL BOX SUB SW 62

DOCUMENTED BY: POWERBOSS

PAGE NUMBER: 6

DATE: APR. 24, 2000

TOOLS: FLATHEAD SCREWDRIVER, 11/32 WRENCH



Attach 2ea. Mnt(3311421) with 2ea. Scr-Pan(3400045) and 2ea. Nut-Hex(3400082). Tighten with flathead screwdriver and 11/32 wrench. Attach Resistor(3311567) as shown.

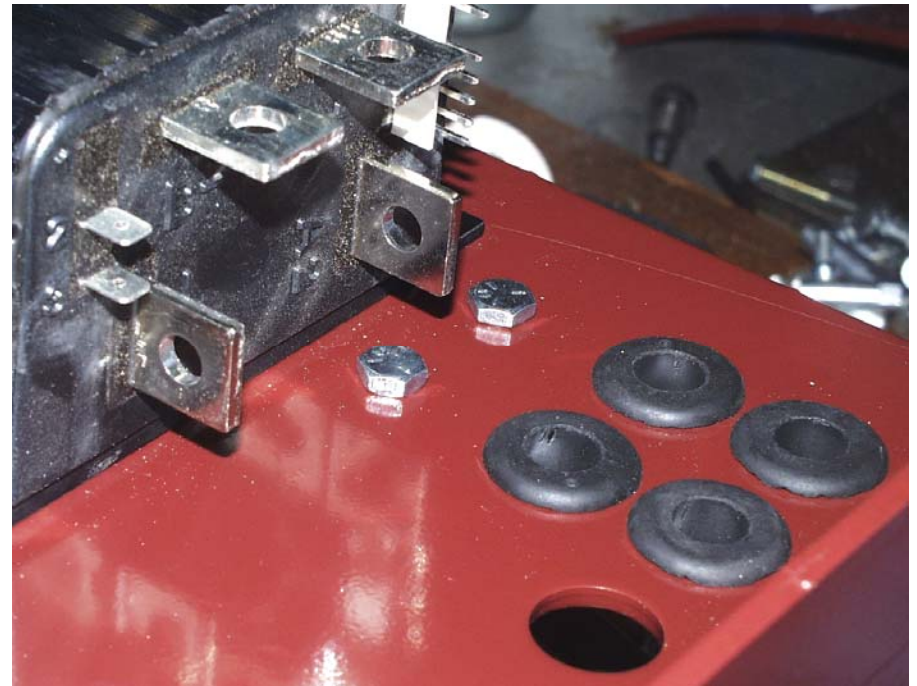
ASSEMBLY# : 3311730 - ASSY-CONTROL BOX SUB SW 62

DOCUMENTED BY: POWERBOSS

PAGE NUMBER: 7

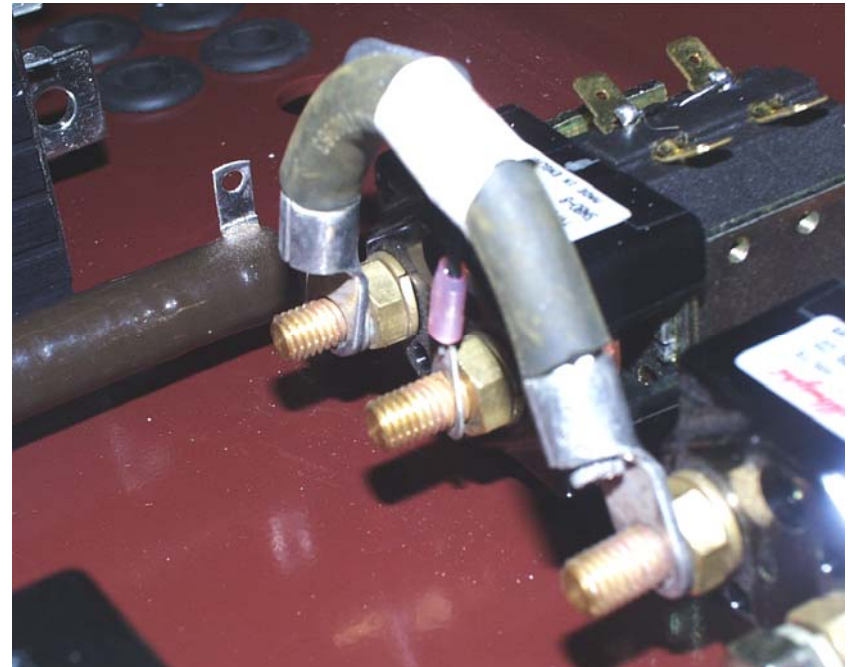
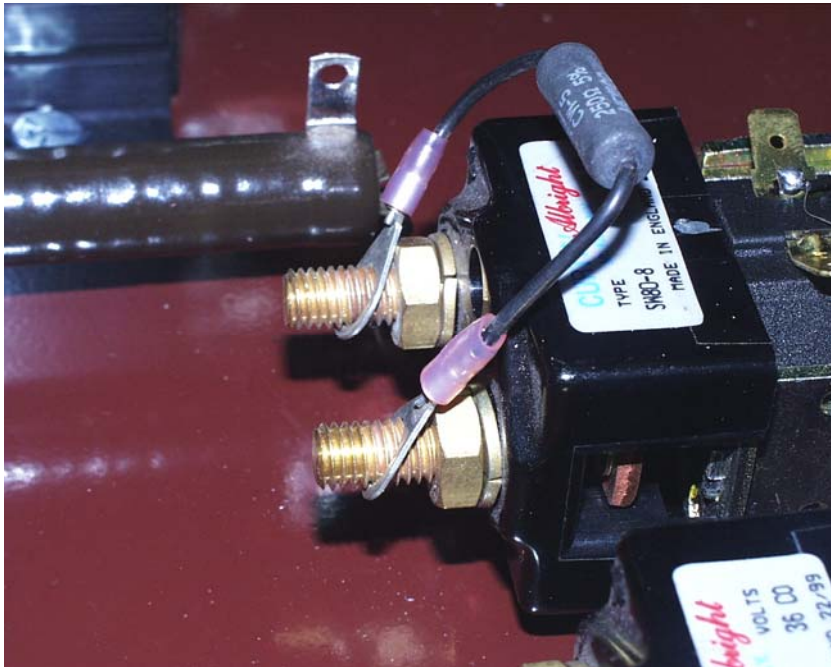
DATE: APR. 24, 2000

TOOLS: 7/16 SOCKET, 7/16 WRENCH



Attach Cable-Battery(3311440) to Bracket(3311568) with 2ea. Scr-Hex(3400227), Nut-Hex(3400081). Tighten with 7/16 socket, 7/16 wrench. Attach battery/bracket to plate with 2ea. Scr-Hex(3400042) and 2ea. Nut-Hex(3400081). Tighten with 7/16 socket and 7/16 wrench.

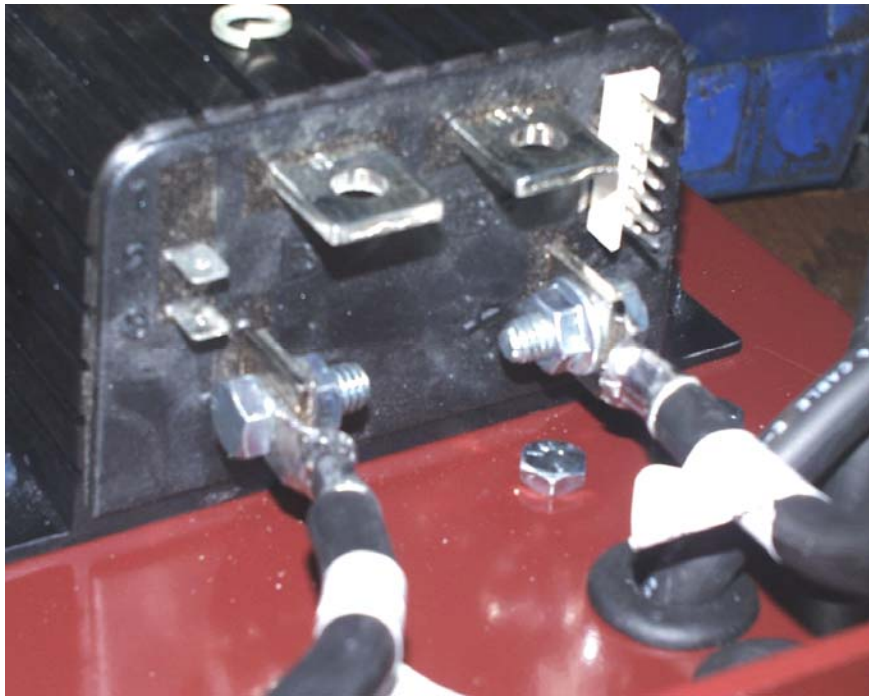
ASSEMBLY# : 3311730 - ASSY-CONTROL BOX SUB SW 62
DOCUMENTED BY: POWERBOSS
PAGE NUMBER: 8
DATE: APR. 24, 2000



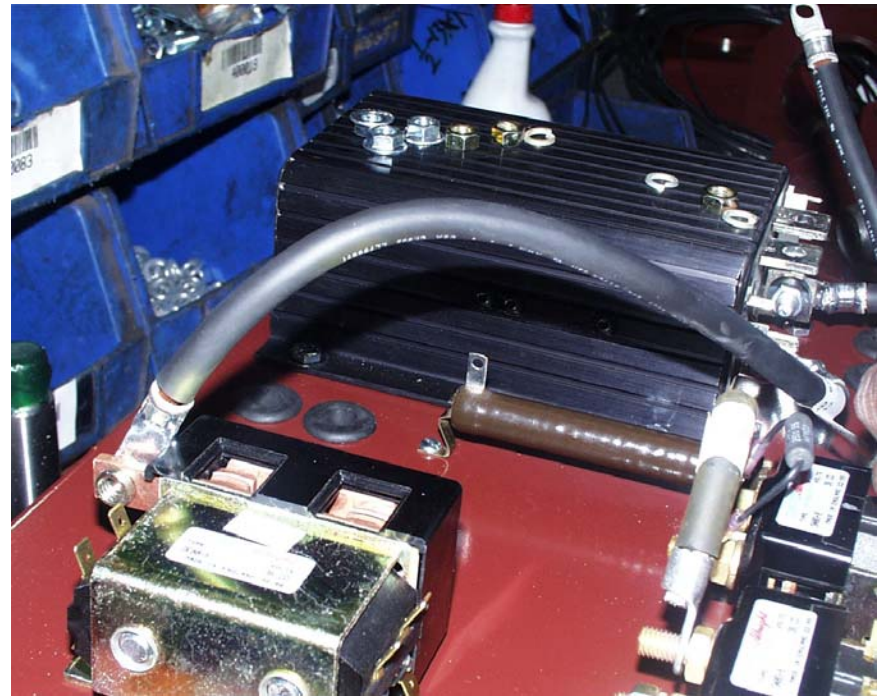
Place Resistor(3311020) and Cable(3311441) onto Contactor as shown.

ASSEMBLY# : 3311730 - ASSY-CONTROL BOX SUB SW 62
DOCUMENTED BY: POWERBOSS
PAGE NUMBER: 9
DATE: APR. 24, 2000

TOOLS: 1/2 WRENCH

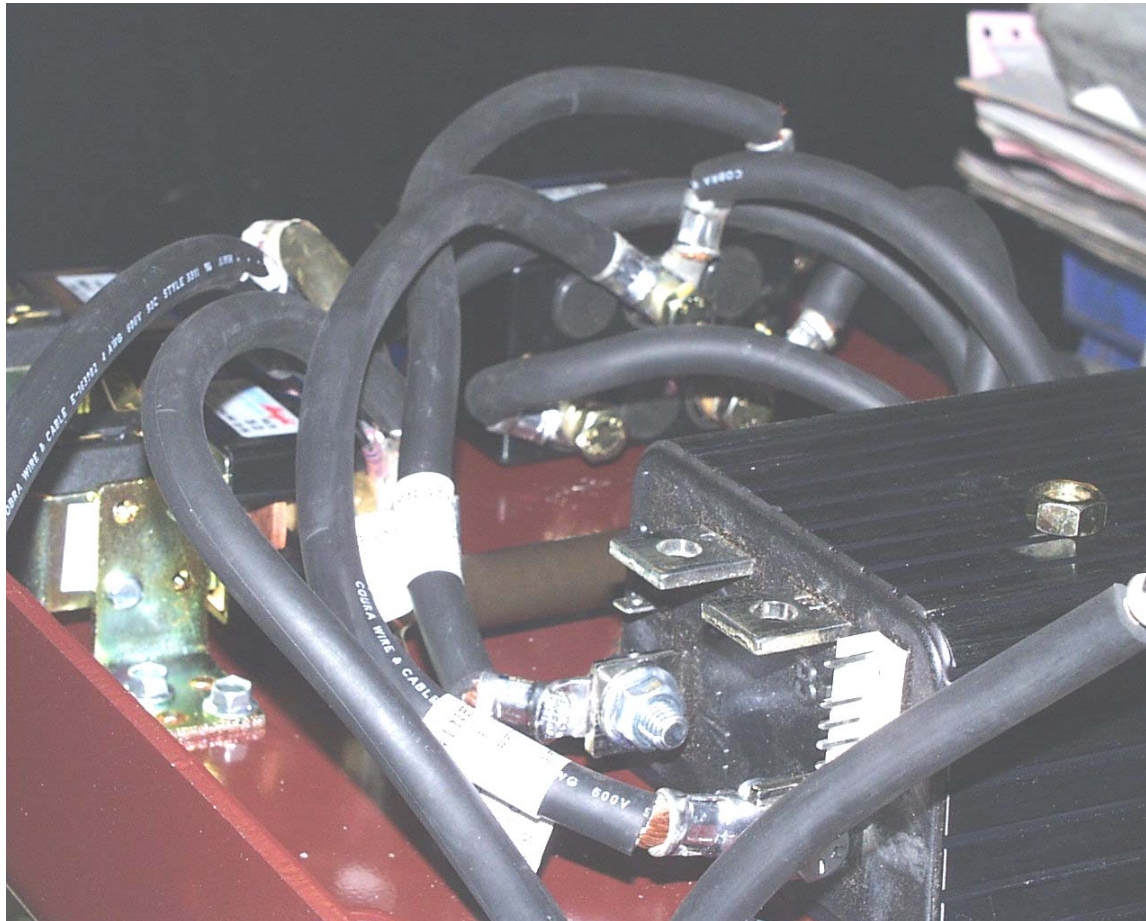


Attach 2ea. Cable(3311443) with 2ea. Scr(3400036) and 2ea. Nut(3400390). Tighten with 1/2 wrench.



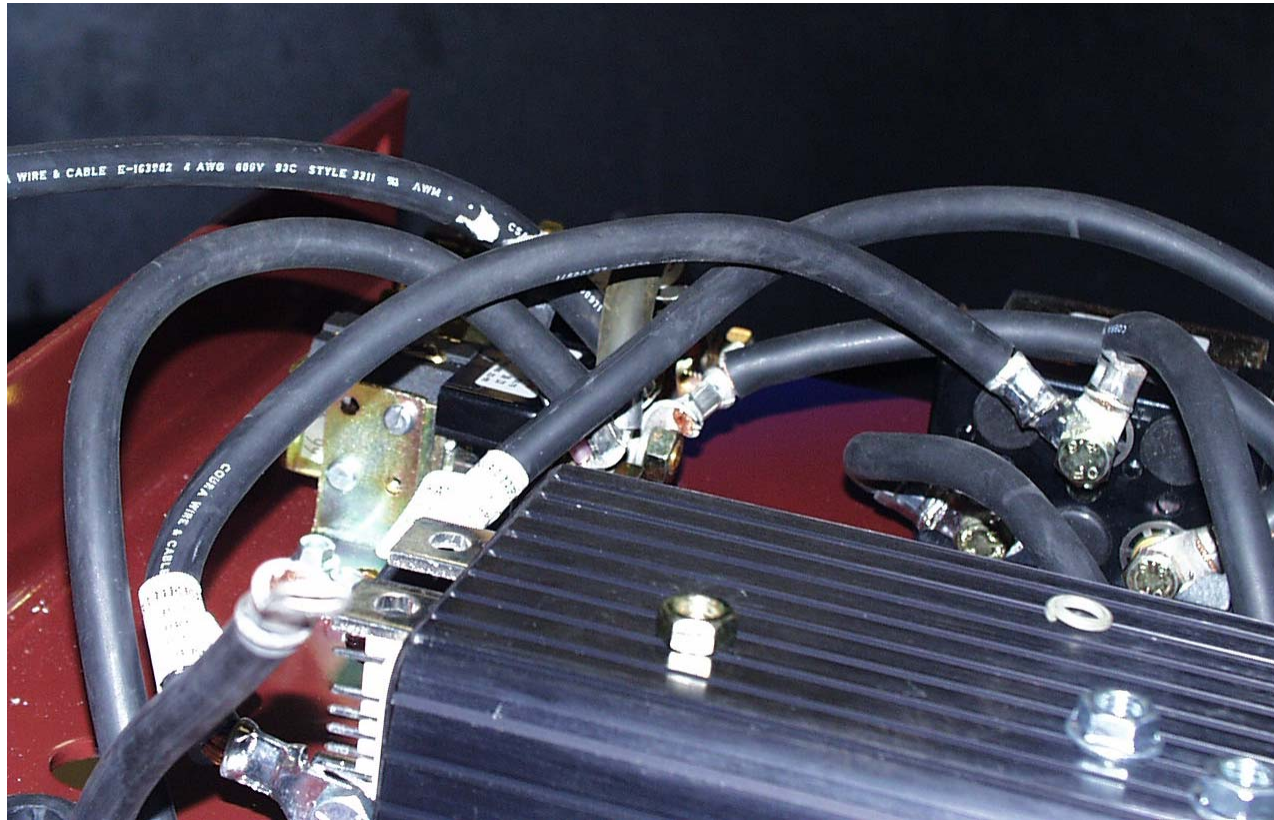
REFER TO WIRING DIAGRAM.

ASSEMBLY# : 3311730 - ASSY-CONTROL BOX SUB SW 62
DOCUMENTED BY: POWERBOSS
PAGE NUMBER: 10
DATE: APR. 24, 2000



**REFER TO WIRING
DIAGRAM.**

ASSEMBLY# : 3311730 - ASSY-CONTROL BOX SUB SW 62
DOCUMENTED BY: POWERBOSS
PAGE NUMBER: 11
DATE: APR. 24, 2000



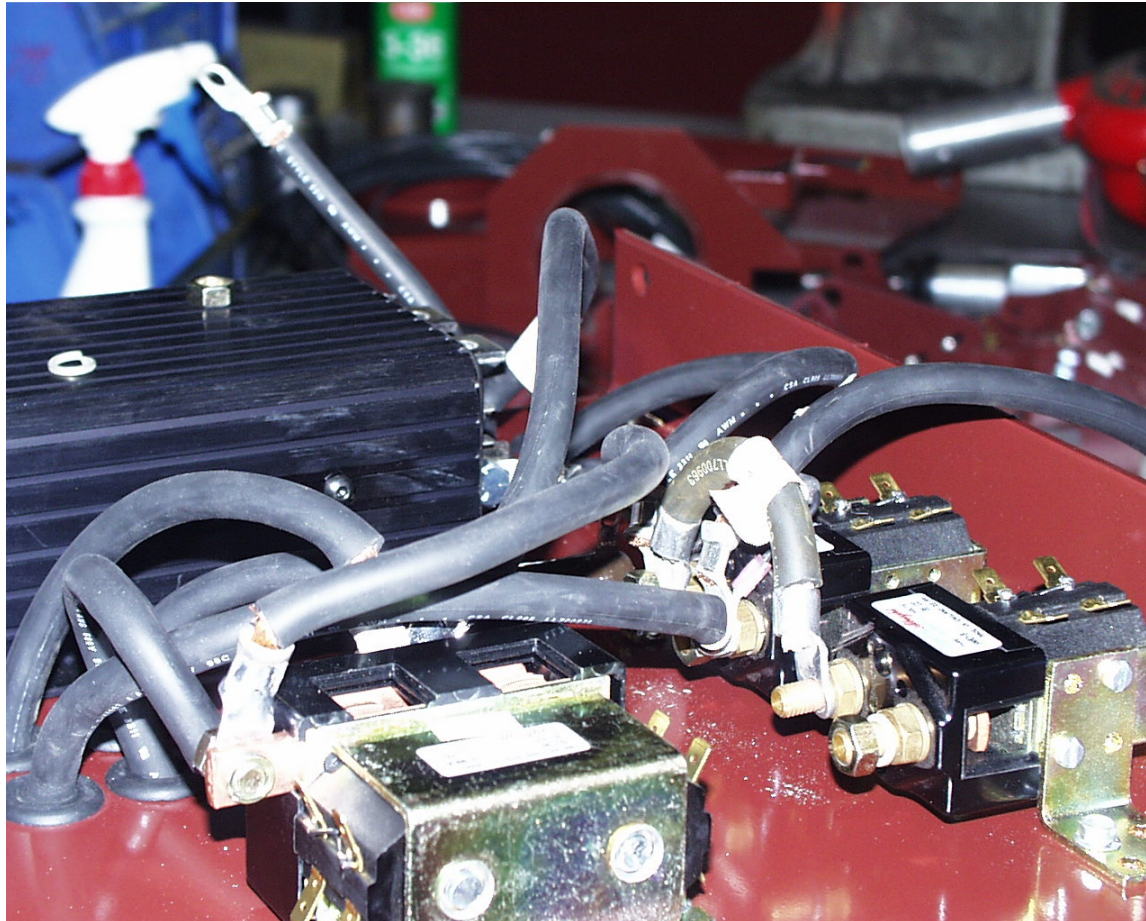
REFER TO WIRING DIAGRAM.

ASSEMBLY# : 3311730 - ASSY-CONTROL BOX SUB SW 62
DOCUMENTED BY: POWERBOSS
PAGE NUMBER: 12
DATE: APR. 24, 2000



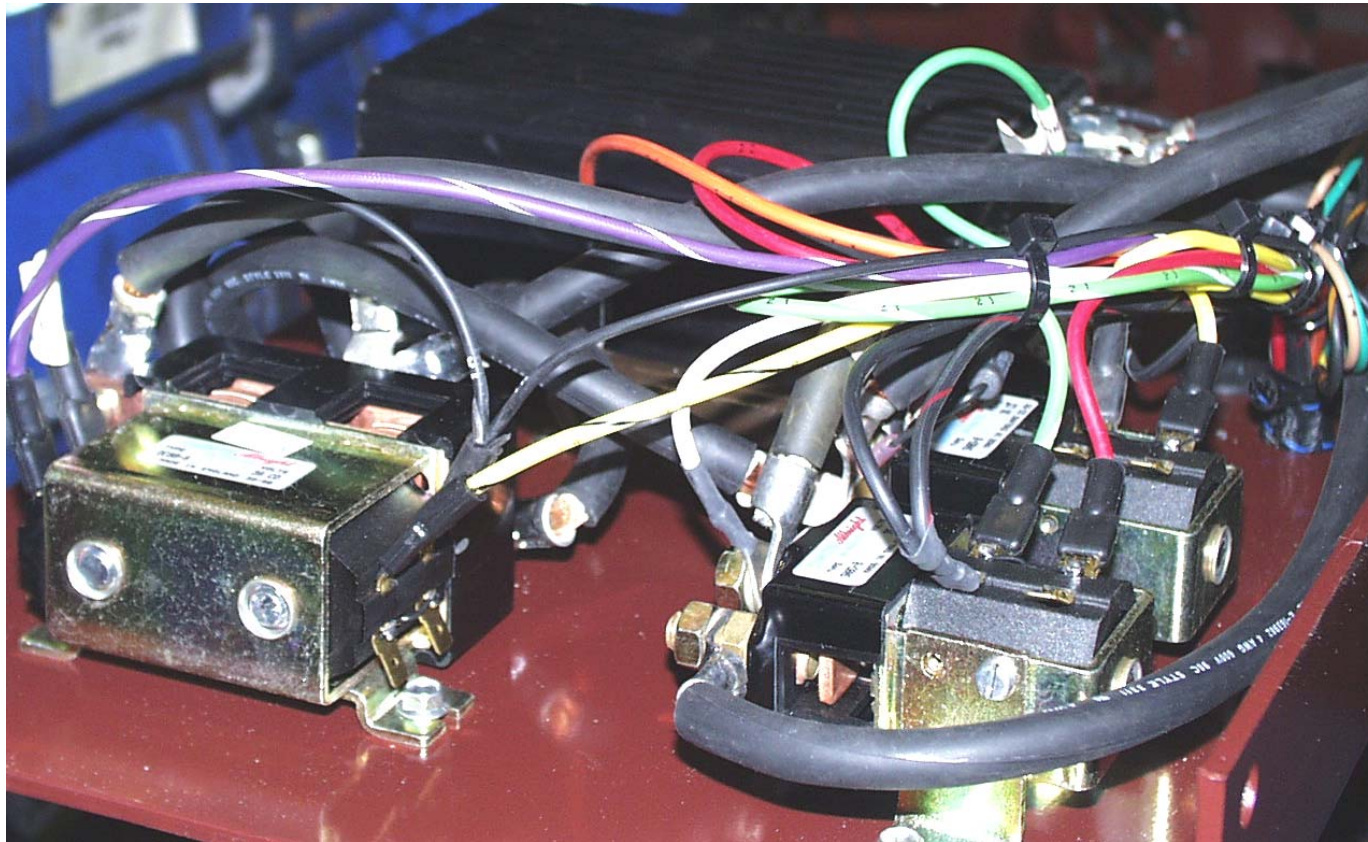
**REFER TO WIRING
DIAGRAM.**

ASSEMBLY# : 3311730 - ASSY-CONTROL BOX SUB SW 62
DOCUMENTED BY: POWERBOSS
PAGE NUMBER: 13
DATE: APR. 24, 2000



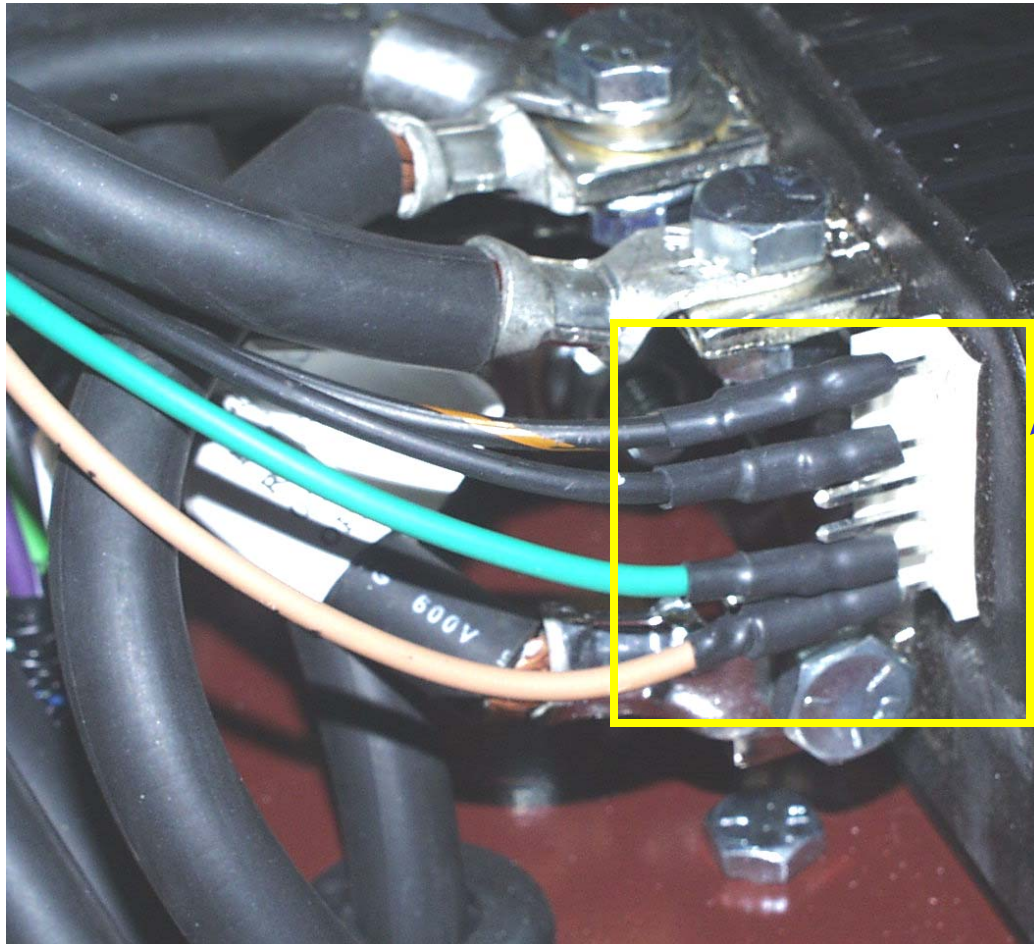
**REFER TO WIRING
DIAGRAM.**

ASSEMBLY# : 3311730 - ASSY-CONTROL BOX SUB SW 62
DOCUMENTED BY: POWERBOSS
PAGE NUMBER: 14
DATE: APR. 24, 2000



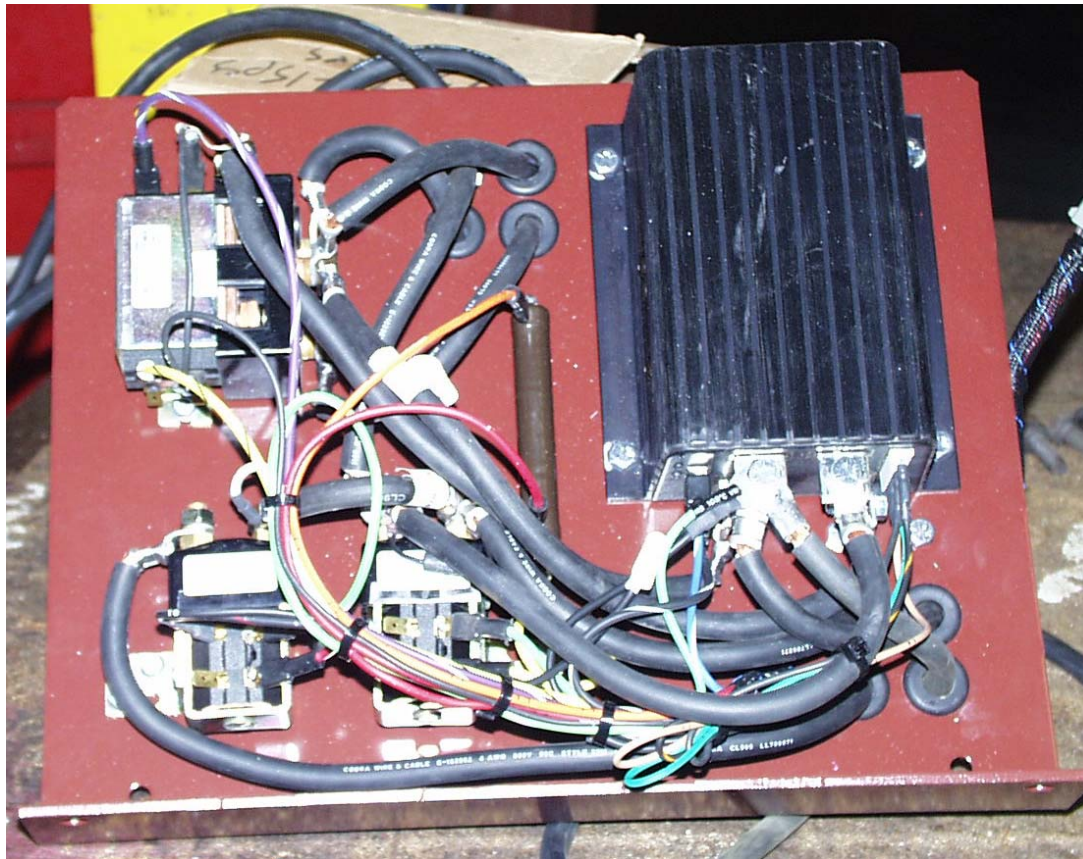
REFER TO WIRING DIAGRAM.

ASSEMBLY# : 3311730 - ASSY-CONTROL BOX SUB SW 62
DOCUMENTED BY: POWERBOSS
PAGE NUMBER: 15
DATE: APR. 24, 2000



Attach male end to wires and crimp to fit. Apply heatshrink as shown. **REFER TO WIRING DIAGRAM.**

ASSEMBLY# : 3311730 - ASSY-CONTROL BOX SUB SW 62
DOCUMENTED BY: POWERBOSS
PAGE NUMBER: 16
DATE: APR. 24, 2000



COMPLETE